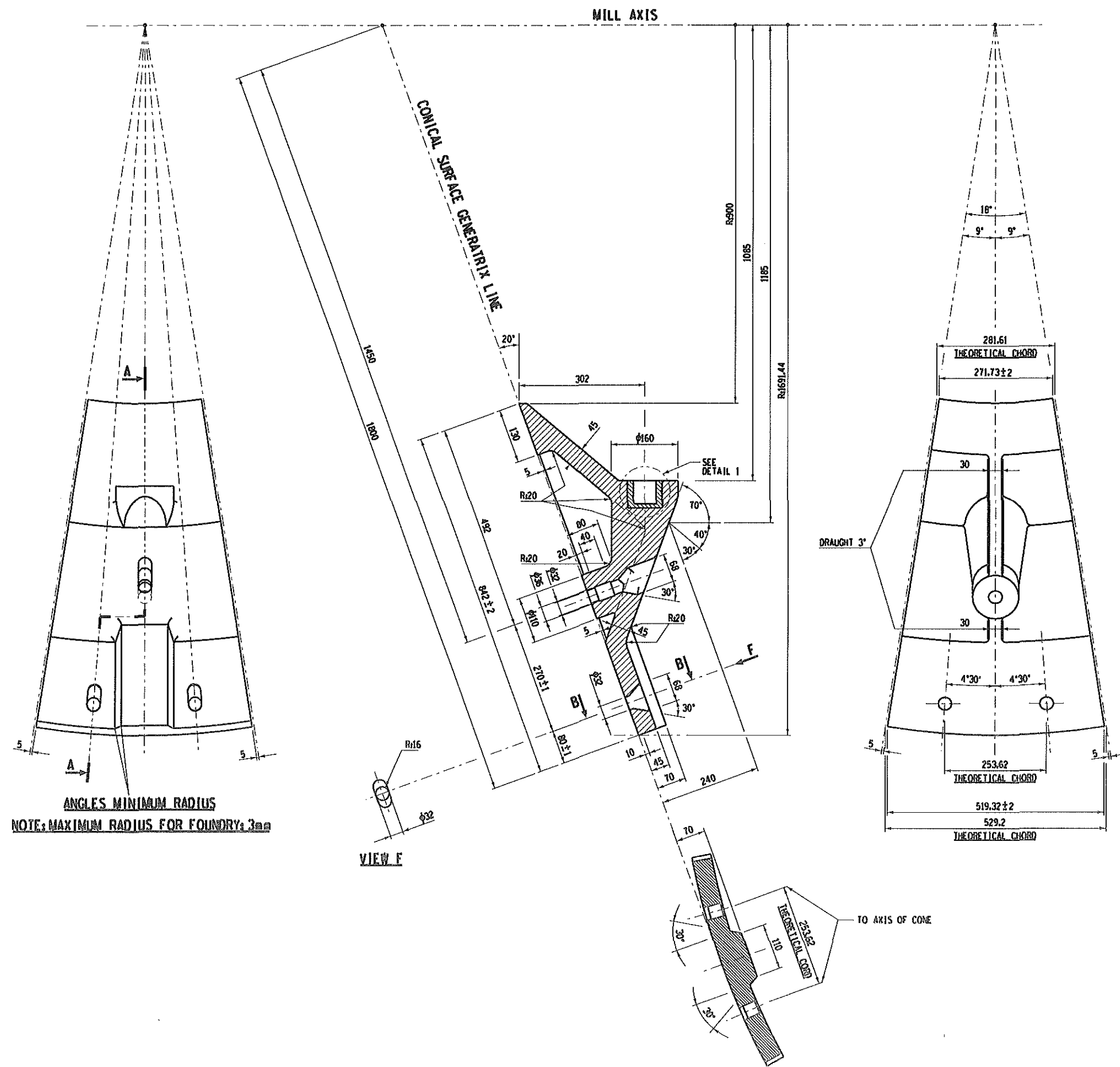


Stock NO: 36314



MATERIAL: PEARLITIC ALLOY STEEL BS 3100 Gr 8W4
NORMALISED & TEMPERED TO 341-375 BHN

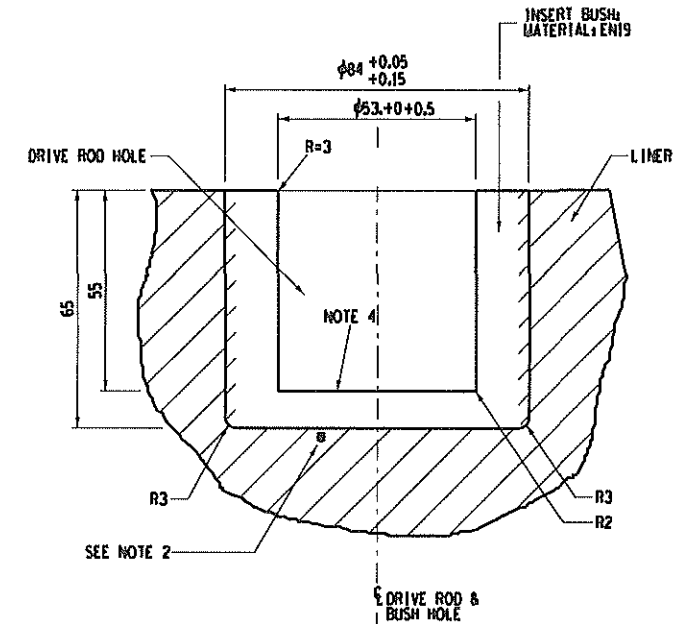
TOTAL WEIGHT: 230kg

GENERAL NOTES:


1.) EVERYWHERE TO BE THE SAME } Rb25
V

NOTES FOR BUSH REFURBISHMENT DETAIL:

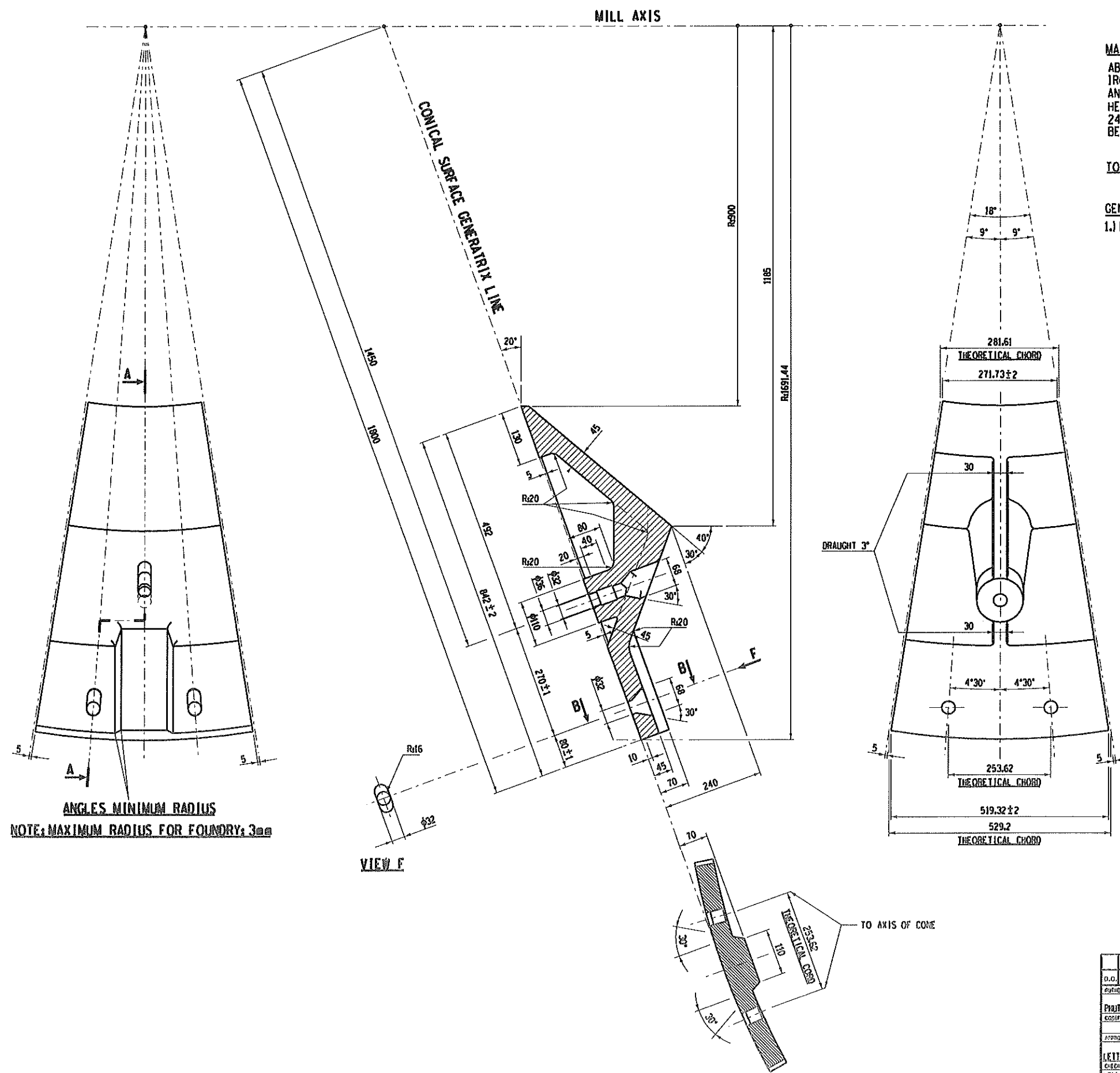
- 1.) BUSH HOLE TO BE MACHINED AFTER SETTING-UP OF LINER ACCORDING TO ANGLE AND CENTER LINE.
- 2.) THERE SHOULD BE NO GAP BETWEEN BUSH AND LINER HOLE BOTTOM. DIMENSION TO BE 0mm & ALL SHARP EDGES WILL BE REMOVED.
- 3.) ORIGINAL CASTING LINER TO BE CAST WITH A HOLE SIZE OF ID.53.5 AND 55 DEEP.
- 4.) SURFACE SHALL BE PERFECTLY FLAT.

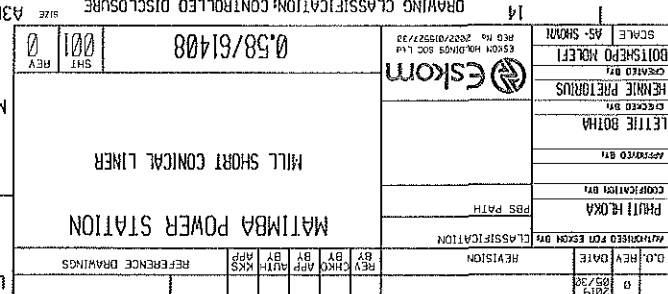
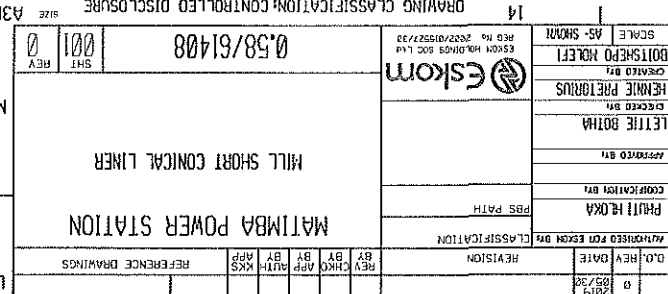


BUSH REFLURBISHMENT DETAIL
SCALE 1/1

2019		REVISED AS PER MARK-UP						L	
O.O.	REV	DATE	REVISION	REV BY	CHKD BY	APP BY	AUTH BY	KKS APP	REFERENCE DRAWINGS
APPROVED FOR CONSTRUCTION									
CLASSIFICATION									
PLANT IN CHARGE				MATimba POWER STATION					
CONFIGURATION No.				INLET SIDE LINER WITH BOSS					
APPROVED BY									
LETITIE BOTHA									
DESIGNED BY									
HEMME PRETORIUS									
CREATED BY									
BOITSISO MOLEFI									
SCALE				DRAWING NUMBER					
1:1.5				0.58/55926					
				SHT 002					
				REV 01					
 Eskom HOLDINGS SCS Ltd REG No 2082/015521/30									

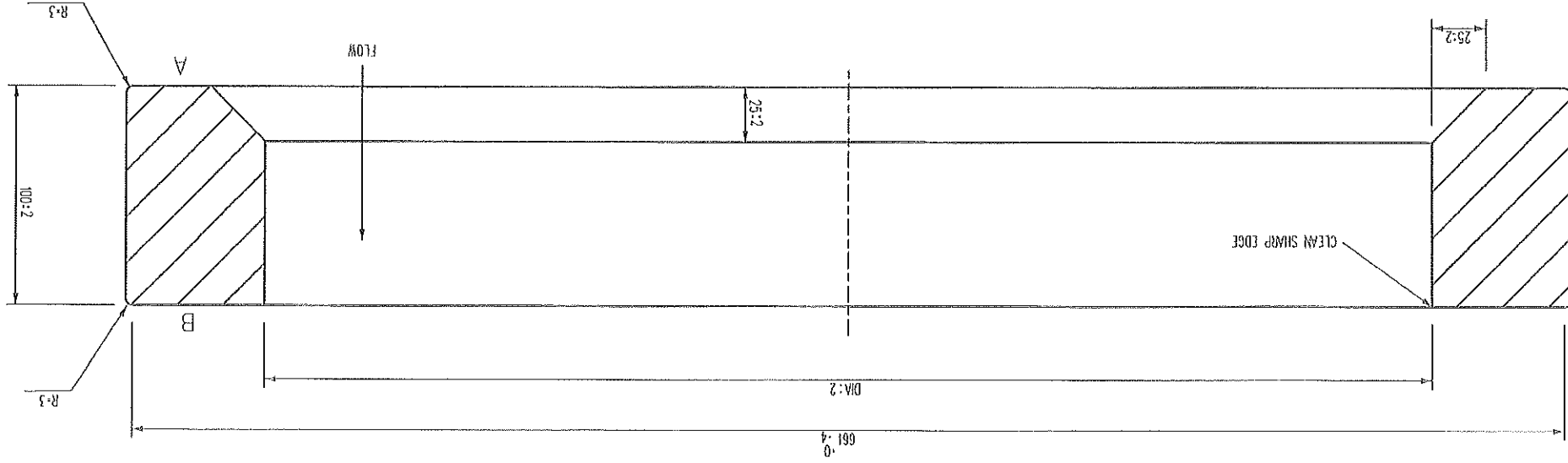
Stock NO: 36313



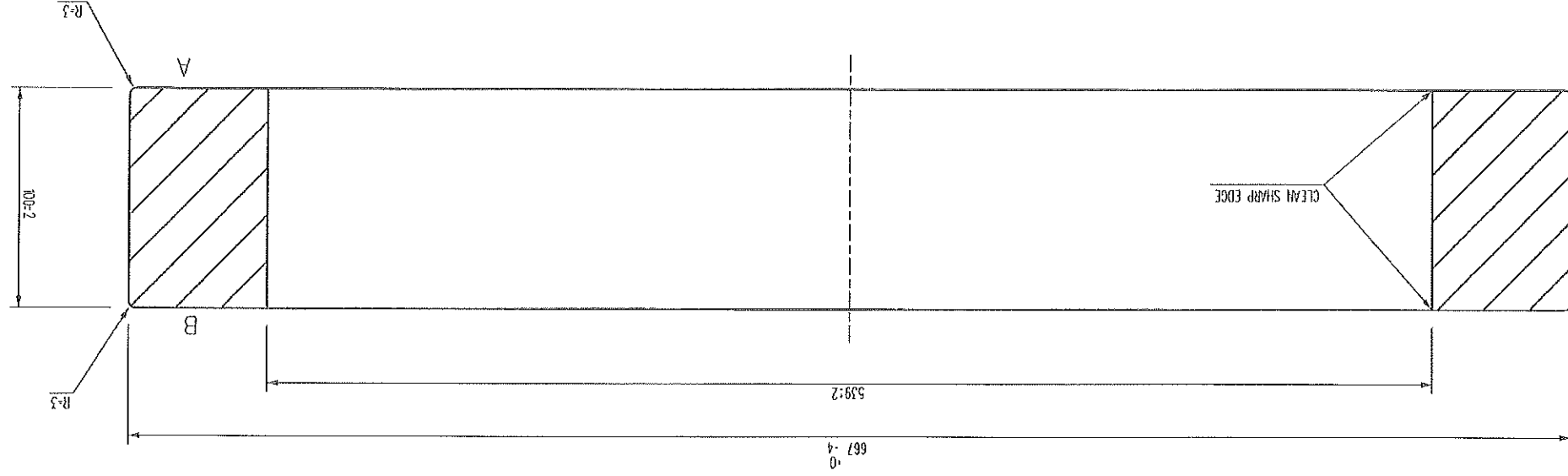
[illegible][illegible][illegible]

Q.D.	REV	DATE	APPROVED FOR EXAM BY	CLASSIFICATION	REV	CHK	APP	BY	APP	BY	DATE	REV	DATE	Q.D.
1	05/30													1
			PRUTHI BECKA			PSS PAITH								
			COMPARISON BY											
			APPROVED BY											
			LETITIE BOTHA											
			DISCLOSED BY											
			HEWANE PRETHIRANUS											
			ORIGINATED BY											
			BOITHSEPO NKELEFI											
			SCALE			AS - SHOWN								
			14			DRAWING CLASSIFICATION, CONTROLLING DISCL.DSURE								
			REV			001								
			SHT			001								
			REV			001								
			0.58/61408											
			MIL SHORT CONICAL LINER											
			MATIMBA POWER STATION											

ITEM	TOTAL PER UNIT		40
0002	424		6
8003	435		2
0004	448		8
8005	462		4
8006	473		4
8007	484		4
8008	517		2
8009	539		10
			40



DRAWING A: ONLY APPLICABLE TO B1002 TO B1008



DRAWING B: ONLY APPLICABLE TO B1009

MATERIAL SPECIFICATIONS
FB C-9 M 5 SEE 17.432.401
Hordness Brinell: 600 HB MIN

- 1) SURFACES A & B ON BOTH DRAWINGS SHALL BE PERFECTLY MACHINED FLAT AND PARALLEL.
- 2) NO CASTING IMPERFECTIONS SHALL BE ALLOWED IN SURFACES MENTIONED IN NOTE 1.
- 3) IT SHALL BE MACHINED CONCENTRICALLY AND ROUND.
- 4) THE HOLE ON A ABOVE TABLE TO APPEAR REPRESENTING THE ID OF THE ORBIT AS PER TABLE.
- 5) THE FRONT SIZE OF THE NUMBERING MENTIONED ABOVE SHALL BE LIMITED TO A MAXIMUM OF 20mm WITH AS PER TABLE.
- 6) PATENT BORDERS OR CAVITY OF BALL OR BALL DEEP.
- 7) PATENT NO IS ALLOWED ON THE OD AS PER SAF REQUIREMENTS AS IN NOTE 5.

NOTES:

2014-05-30
Will Peltorus
Chadwick

[illegible]